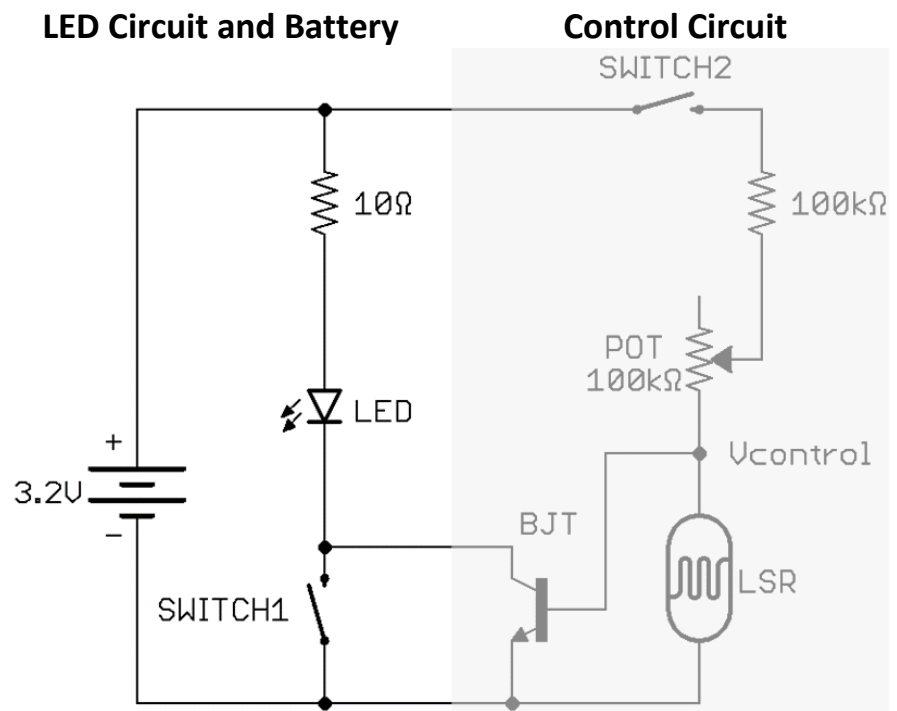


HIMALAYAN MAKERS GUILD

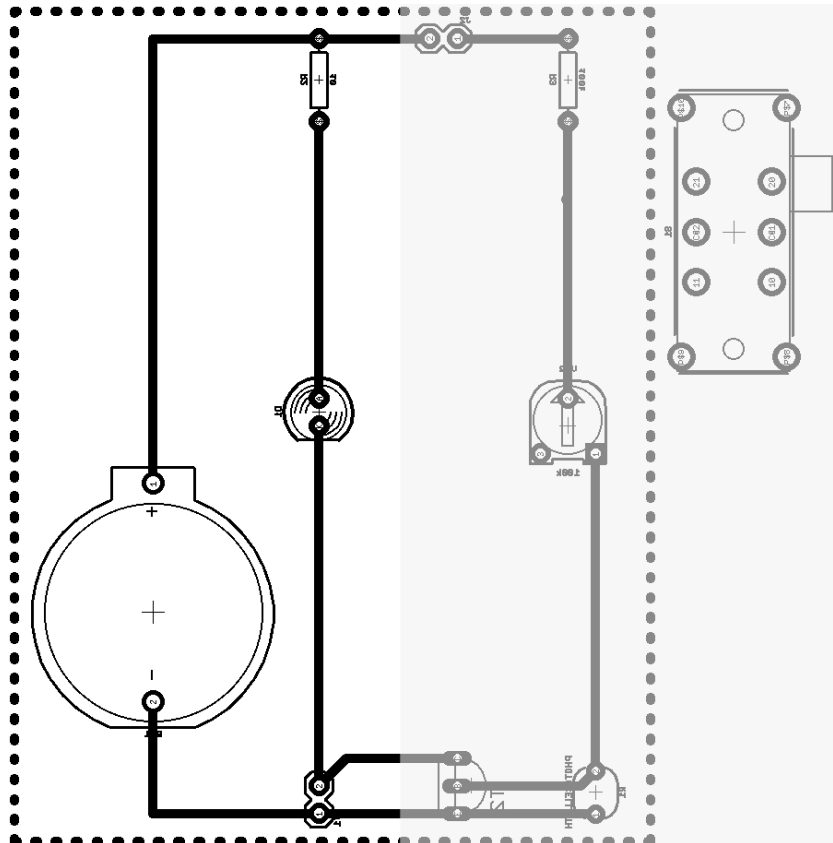
Activity 12 – Soldering a Night-Light Circuit

Transferring the Circuit to a Prototype Board

We can think of the nightlight as two parts: the **LED Light Circuit** and the **Control Circuit**.



This is what the circuit will look like when we solder it onto the circuit board.



Soldering Safety Review



Safety Glasses



Ventilation



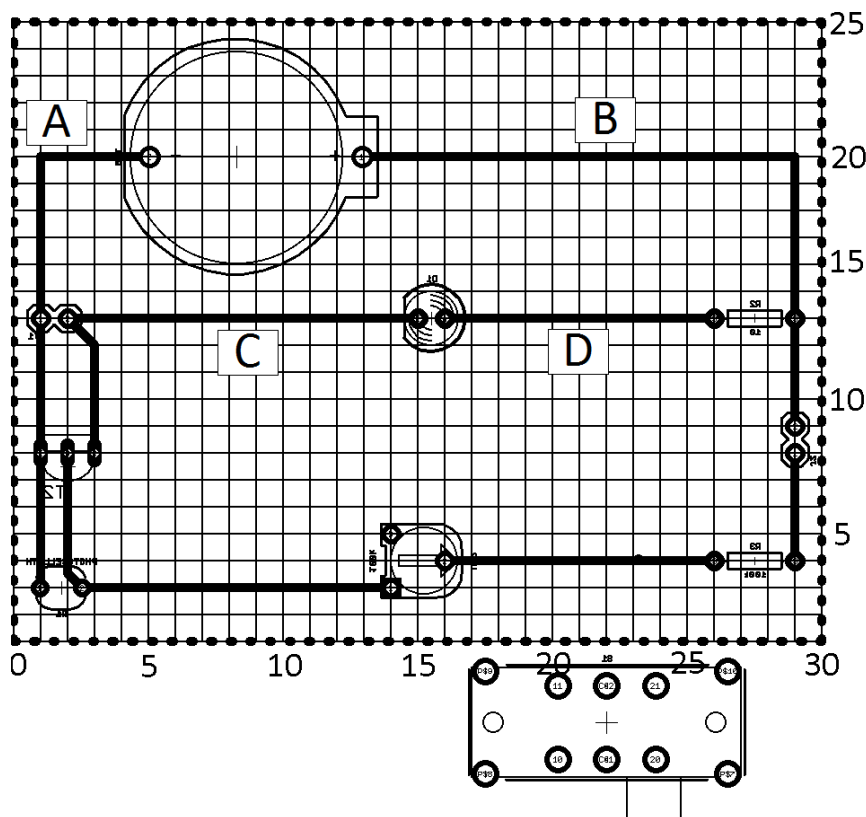
Hot Iron



Wash Hands

Soldering Part 1 – LED Circuit and Battery

Here, we see the bottom of our circuit board, where the copper plates are. Our parts will actually be on the top side of the board, with their pins sticking through to the bottom side, where we can then solder them to the copper plates.



We will start by soldering the first four wires:

A
Battery +

B
Battery -

C
LED -

D
LED +

Once we've soldered all of the wires onto the board, we will put in these first three parts and solder them into place:

